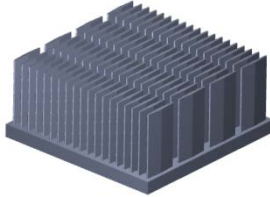


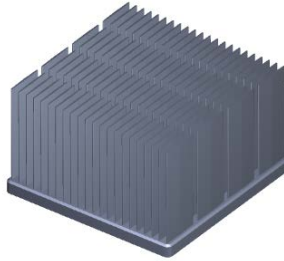
## FN Series Heat Sinks



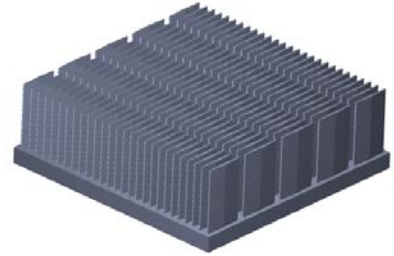
FN25



FN40



FN50



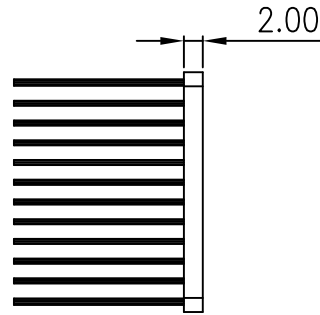
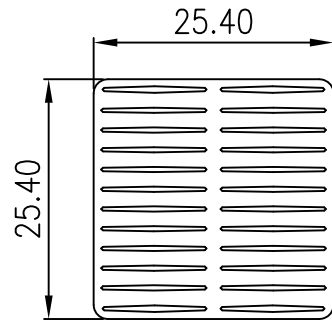
FN60

1: Material : ALUMINUM  
 2: FINISH: BLACK ANODIZE

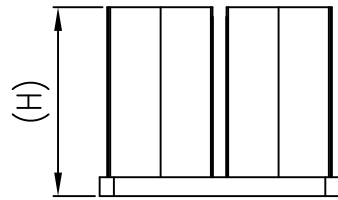
## SPECIFICATION

SERIES	L X W (mm)	H (mm)	Fin	Clip
FN25003-xx20BA	25X25	6,8,10,15,20	ELLIPTIC	Z - BAR
FN40003-xxxxBA	40X40	6,8,10,15,20	ELLIPTIC	Z - BAR
FN50003-xxxxBA-M	50X50	6,8,10,15,18, 20, 25, 30	ELLIPTIC	Z - BAR
FN60003-xxxxBA	60X60	6,8,10,15,20	ELLIPTIC	Z - BAR


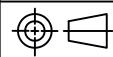
MATERIAL:AL1060  
FINISH:BLACK ANODIZE

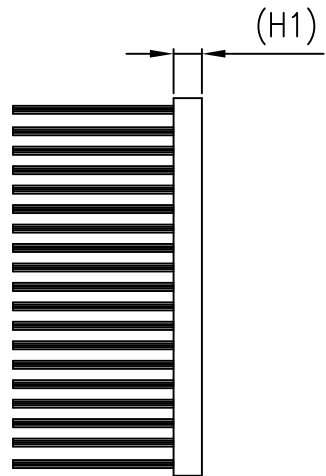
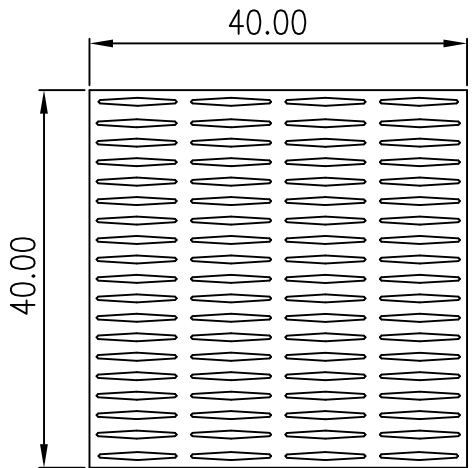


MODEL	HEIGHT(H)
FN25003-0620BA	6
FN25003-0820BA	8
FN25003-1020BA	10
FN25003-1520BA	15
FN25003-2020BA	20



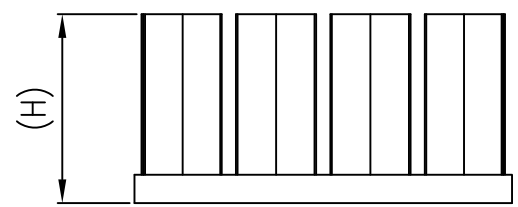
**PROPRIETARY NOTE:**  
This document contains confidential information and proprietary to Rego Electronics and shall not be reproduced or disclosed to other documents or used for any purpose other than that for which was obtained without the expressed written consent of Rego Electronics.

.X ± 0.30	APPROVED: Chris	 <a href="http://www.rego.com.tw">http://www.rego.com.tw</a>	
.XX ± 0.20	CHECKED: Andy		
.XXX ± 0.15	DRAWN: Vic		
X* ± 3*			
	UNITS: mm	SCALE: NONE	TITLE: Heat Sink 25.4x25.4mm H=06-20mm Aluminum
	PART NO: FN25003-xxxxBA		SHEET: 1 OF 1


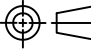


MATERIAL:AL1060  
FINISH:BLACK ANODIZE

MODEL	HEIGHT(H)	Base(H1)
FN40003-0620BA	6	2
FN40003-0820BA	8	2
FN40003-1030BA	10	3
FN40003-1530BA	15	3
FN40003-1830BA	18	3
FN40003-2030BA	20	3



PROPRIETARY NOTE:  
This document contains confidential information and proprietary to Rego Electronics and shall not be reproduced or disclosed to other documents or used for any purpose other than that for which was obtained without the expressed written consent of Rego Electronics.

.X ± 0.30	APPROVED: Chris	 <a href="http://www.rego.com.tw">http://www.rego.com.tw</a>	
.XX ± 0.20	CHECKED: Andy		
.XXX ± 0.15	DRAWN: Vic		
X* ± 3*			
	UNITS: mm	SCALE: NONE	TITLE: Heat Sink 40x40mm H=06-20mm Aluminum
		PART NO: FN40003-xxxxBA	SHEET: 1 OF 1

1 2 3 4 5 6 7 8 9 10

A

B

C

D

E

F

A

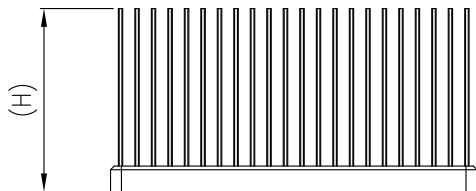
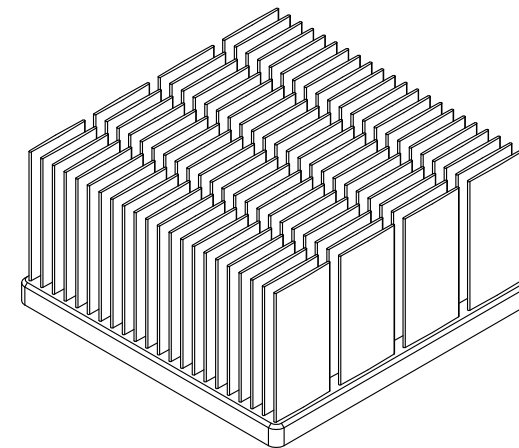
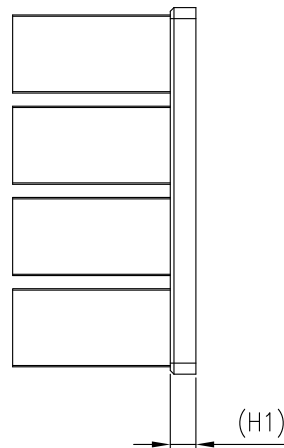
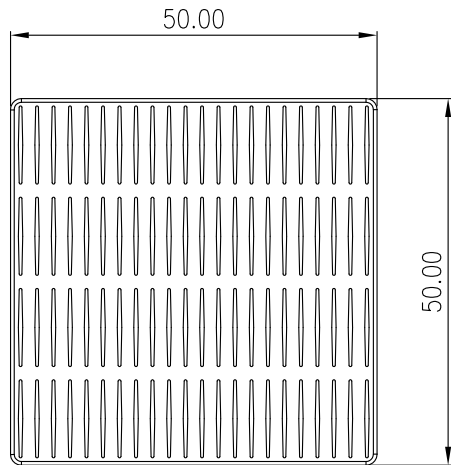
B

C

D

E

F


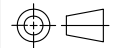


MODEL	HEIGHT(H)	Base(H1)
FN50003-0635BA-M	6	3.5
FN50003-0835BA-M	8	3.5
FN50003-1035BA-M	10	3.5
FN50003-1535BA-M	15	3.5
FN50003-1835BA-M	18	3.5
FN50003-2035BA-M	20	3.5
FN50003-2535BA-M	25	3.5
FN50003-3035BA-M	30	3.5

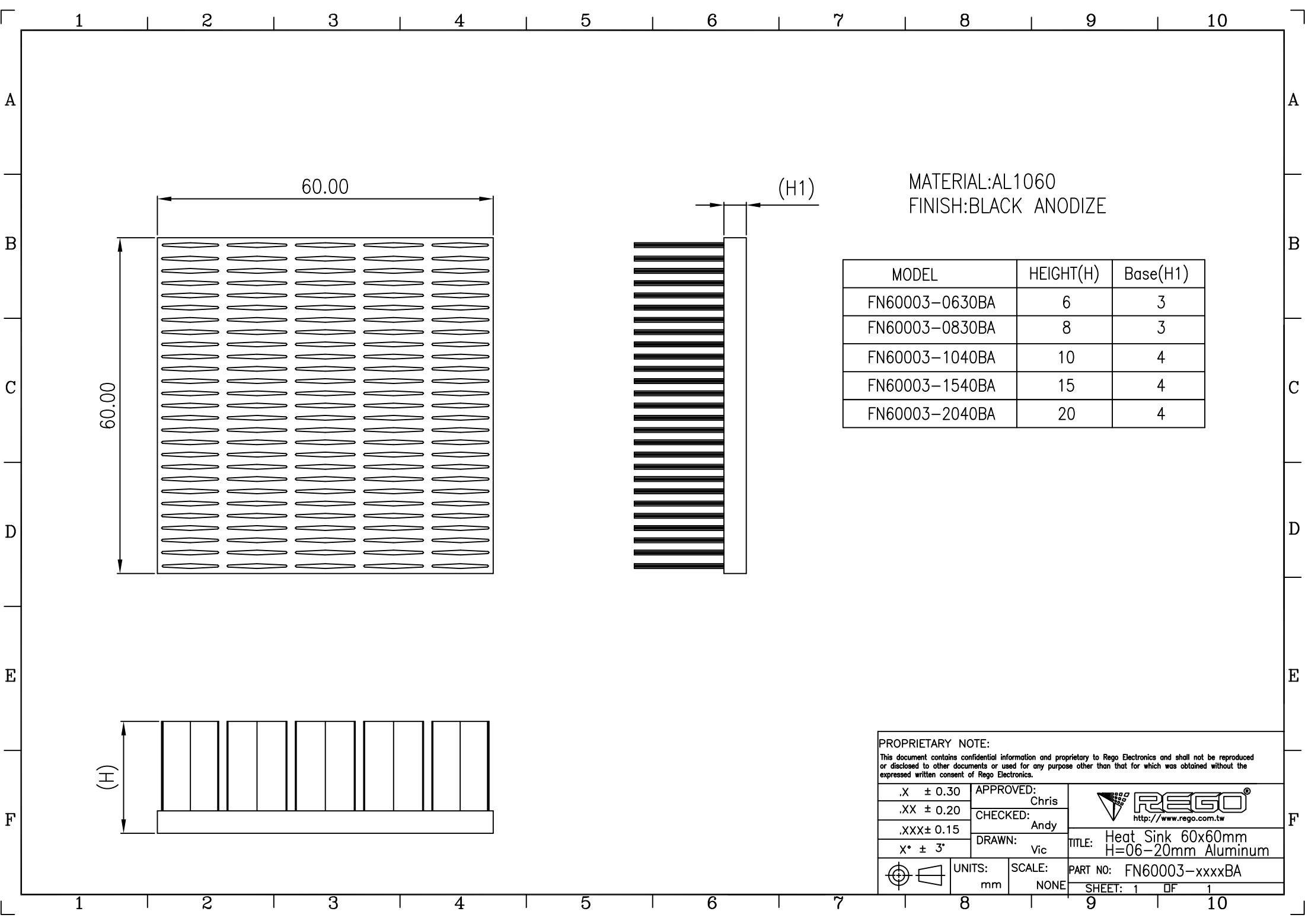
MATERIAL:AL1070  
FINISH:BLACK ANODIZE

PROPRIETARY NOTE:

This document contains confidential information and proprietary to Rego Electronics and shall not be reproduced or disclosed to other documents or used for any purpose other than that for which was obtained without the expressed written consent of Rego Electronics.

.X ± 0.30	APPROVED: Chris	 <a href="http://www.rego.com.tw">http://www.rego.com.tw</a>
.XX ± 0.20	CHECKED: Denny	
.XXX ± 0.15	DRAWN: Vicky	TITLE: Heat Sink 50x50mm H=06-30mm Aluminum
X° ± 3'		PART NO: FN50003-xxxxBA-M
	UNITS: mm	SCALE: NONE
		SHEET: 1 of 1


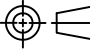
1 2 3 4 5 6 7 8 9 10



MATERIAL:AL1060  
FINISH:BLACK ANODIZE

MODEL	HEIGHT(H)	Base(H1)
FN60003-0630BA	6	3
FN60003-0830BA	8	3
FN60003-1040BA	10	4
FN60003-1540BA	15	4
FN60003-2040BA	20	4

PROPRIETARY NOTE:  
This document contains confidential information and proprietary to Rego Electronics and shall not be reproduced or disclosed to other documents or used for any purpose other than that for which was obtained without the expressed written consent of Rego Electronics.

.X ± 0.30	APPROVED: Chris	 <a href="http://www.rego.com.tw">http://www.rego.com.tw</a>	
.XX ± 0.20	CHECKED: Andy		
.XXX ± 0.15	DRAWN: vic		
X* ± 3'			
	UNITS: mm	SCALE: NONE	TITLE: Heat Sink 60x60mm H=06-20mm Aluminum
			PART NO: FN60003-xxxxBA
			SHEET: 1 OF 1