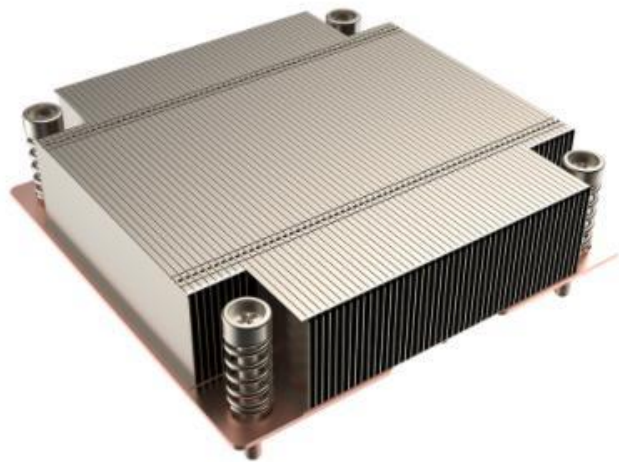


# RQ Curve Test Report



Date: 2022/05/04

Engineer: Bryan



Part Number:

## RGD3128VCL-P-002

Description:

### 1U PASSIVE CPU COOLER FOR INTEL SOCKET LGA1700 PROCESSORS

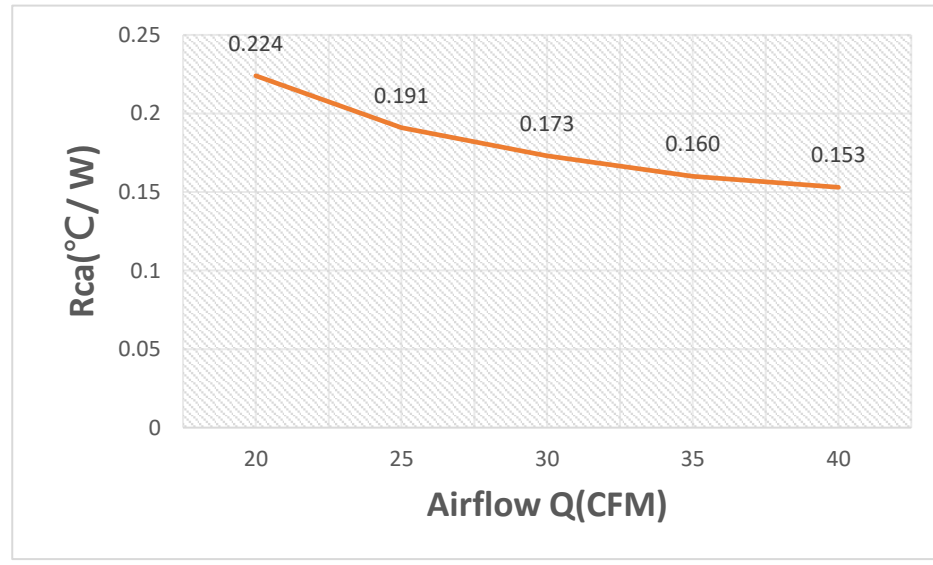
#### Test Condition

Heat Flux	RH (Ambient Humidity)	Ta (Ambient Temperature)	Convection
180Watts	53 %	Room Temperature	20~45 CFM

#### Test Data

Item	Airflow Q(CFM)	$\Delta p$ (mm-Aq)	Tc(°C)	Ta(°C)	Power(W)	Rca(°C/W)
1	20	5.5	64.4	24	180	0.224
	25	7.3	59.4	25	180	0.191
	30	9.4	56.6	25.4	180	0.173
	35	11.5	54.8	26	180	0.160
	40	14.1	52.6	25	180	0.153

#### Test Result



# RQ Curve Test Report

## Airflow Rate and Pressure Measurement Apparatus



**Applicable for various airflow rate, pressure and specimens**

- **Airflow rate: 2.4~250CFM**
- **Temperature: Temperature ~ ~60°C**
- **The height can be adjusted from 1U to 4U.**

# Compression Force Test Report



Part Number:

**RGD3128VCL-P-002**

Description:

**1U PASSIVE CPU COOLER FOR INTEL**

**SOCKET LGA1700 PROCESSORS**

Date: 2022/10/11

Engineer: Vic

## Test Criterion

Total Force of CPU Cooler		
Typical	Maximum	Minimum
28.14 lbf	30.96 lbf	25.33 lbf

## Test Condition

PCB Thickness	CPU Height (about PCB)
1.6mm	7.05mm

## Test Data

Sample	Compression Force
1	27.7 lbf
2	28.0 lbf
3	27.9 lbf
AVG	27.86 lbf

## Test Result

Pass	Compression Force of CPU Cooler = 27.86 lbf
------	---

# Compression Force Test Report

## CPU Cooler Press Load Apparatus



- The universal clip force measuring device is a tool for measuring the clip holding force for the clip on the CPU Cooler.
- Measuring pressure range 0~220lbf,; accuracy 0.1%FS