

# RQ Curve Test Report



Date: 2022/05/04

Engineer: Bryan



Part Number:

**RGD3128-P2-002**

Description:

**1U PASSIVE CPU COOLER  
FOR INTEL SOCKET LGA1700  
PROCESSORS**

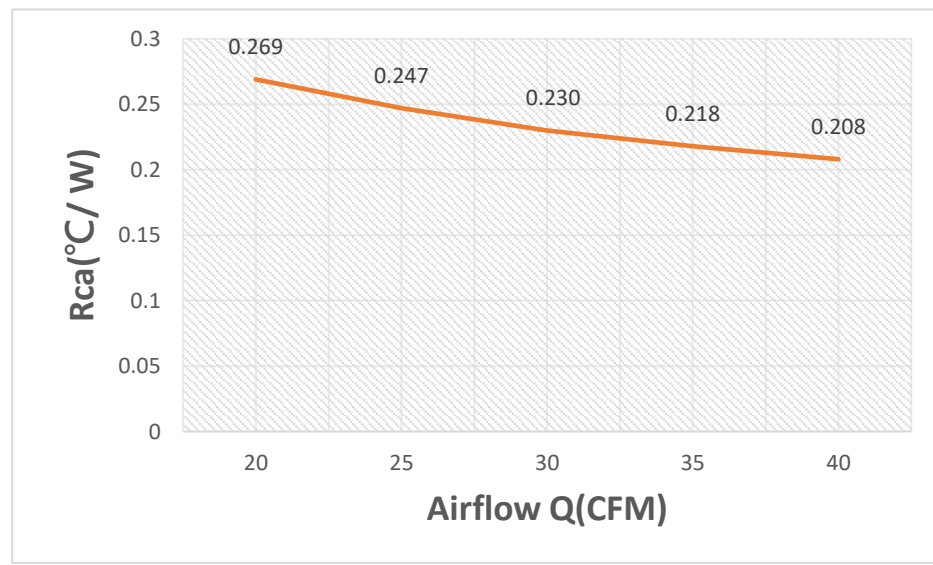
**Test Condition**

Heat Flux	RH (Ambient Humidity)	Ta (Ambient Temperature)	Convection
180 Watts	53 %	Room Temperature	20~40 CFM

**Test Data**

Item	Airflow Q(CFM)	$\Delta p$ (mm-Aq)	Tc(°C)	Ta(°C)	Power(W)	Rca(°C/W)
1	20	3.9	73.4	24.9	180	0.269
	25	5.5	69.7	25.1	180	0.247
	30	7.3	66.8	25.4	180	0.230
	35	9.3	65.1	25.8	180	0.218
	40	11.4	62.6	25.1	180	0.208

**Test Result**



# RQ Curve Test Report

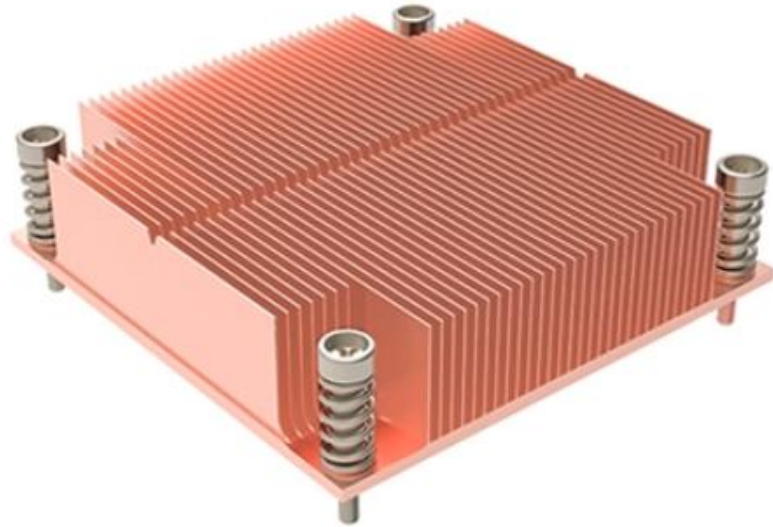
## Airflow Rate and Pressure Measurement Apparatus



**Applicable for various airflow rate, pressure and specimens**

- **Airflow rate: 2.4~250CFM**
- **Temperature: Temperature ~ ~60°C**
- **The height can be adjusted from 1U to 4U.**

# Compression Force Test Report



Part Number:

**RGD3128-P2-002**

Description:

**1U PASSIVE CPU COOLER FOR INTEL**

**SOCKET LGA1700 PROCESSORS**

Date: 2022/10/11

Engineer: Vic

## Test Criterion

Total Force of CPU Cooler		
Typical	Maximum	Minimum
29.77 lbf	32.75 lbf	26.80 lbf

## Test Condition

PCB Thickness	CPU Height (about PCB)
1.6mm	7.05mm

## Test Data

Sample	Compression Force
1	29.5 lbf
2	29.7 lbf
3	29.2 lbf
AVG	29.47 lbf

## Test Result

Pass	Compression Force of CPU Cooler = 29.47 lbf
------	---

# Compression Force Test Report

## CPU Cooler Press Load Apparatus



- The universal clip force measuring device is a tool for measuring the clip holding force for the clip on the CPU Cooler.
- Measuring pressure range 0~220lbf,; accuracy 0.1%FS